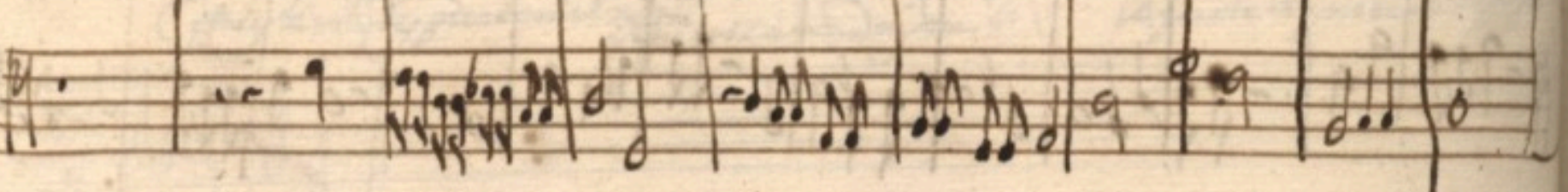
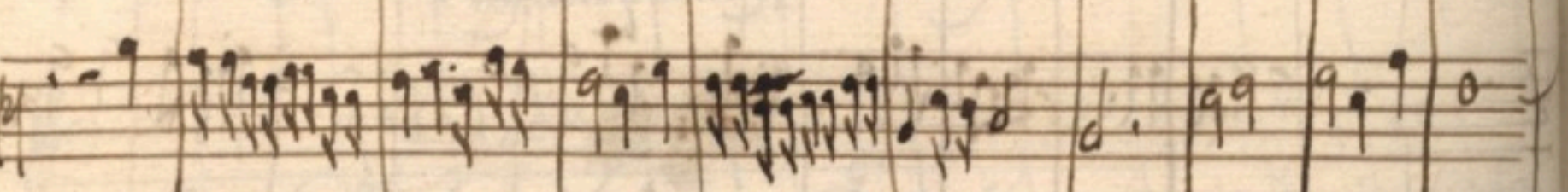
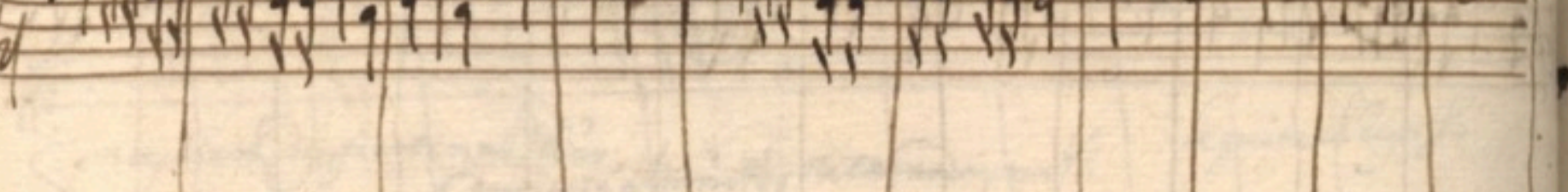
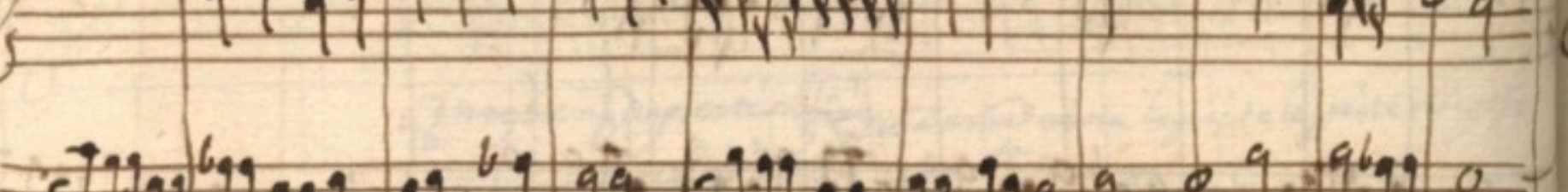
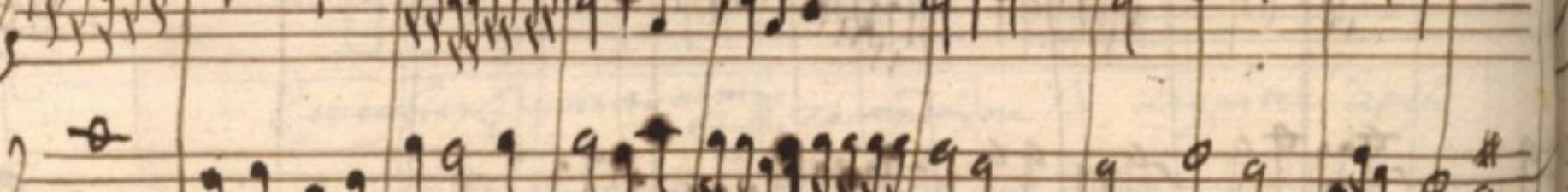
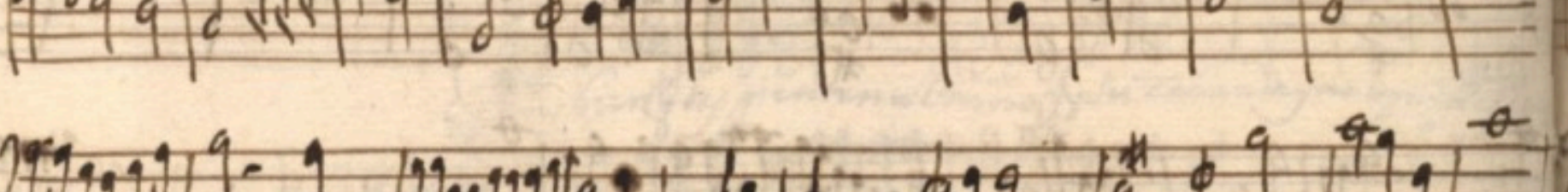
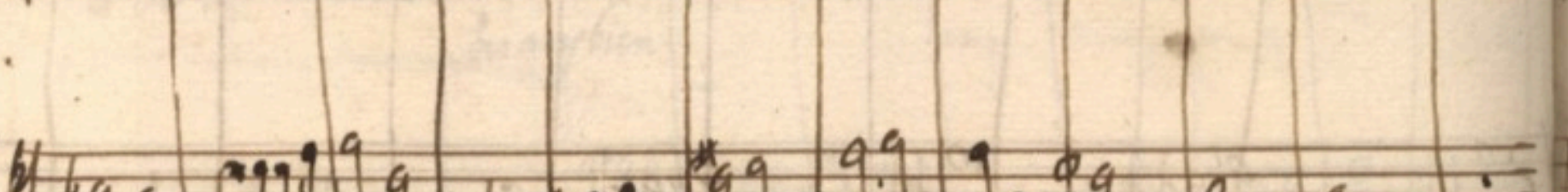
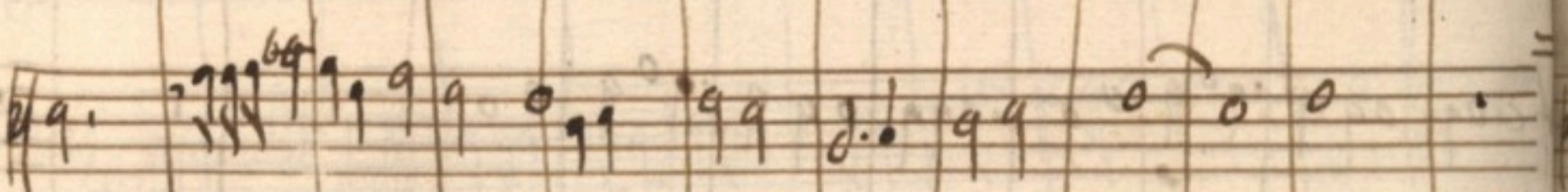
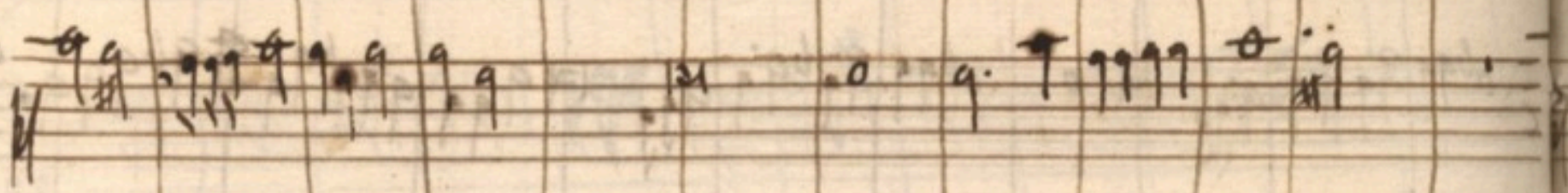
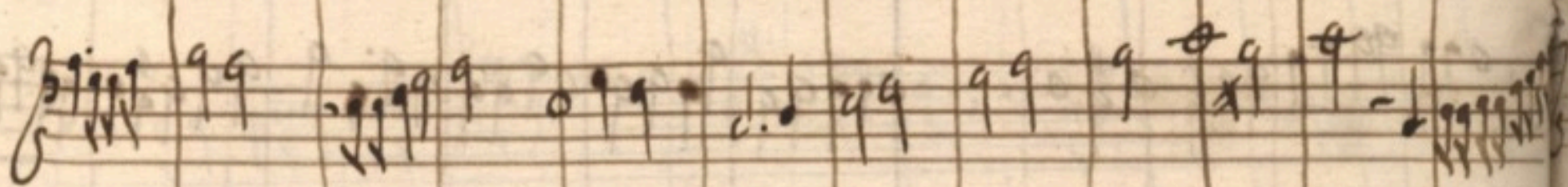
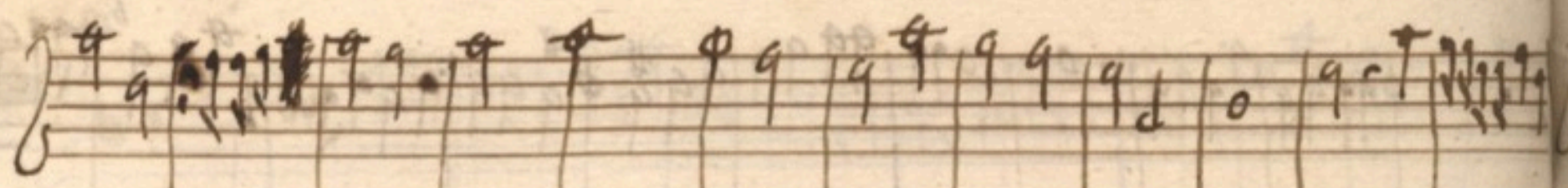


270
Handwritten notes and symbols at the top right of the page.

Handwritten musical notation on ten staves. The notation includes various note values (quarter, eighth, sixteenth notes), rests, and accidentals (sharps, flats). The first staff begins with a treble clef and a common time signature 'C'. The notation is dense and appears to be a single melodic line. The paper shows signs of age, including foxing and staining.

Four empty musical staves at the bottom of the page, arranged vertically. They are blank, showing only the five-line structure of each staff.



Handwritten musical notation on five staves. The notation includes various rhythmic values such as eighth and sixteenth notes, often beamed together. There are also rests and some larger note values. The staves are connected by vertical bar lines.

Handwritten musical notation on five staves, continuing the piece. This section features similar rhythmic complexity with many beamed notes and rests. The notation is dense and fills most of the staves.

Five empty musical staves at the bottom of the page, indicating the end of the written music on this page.